

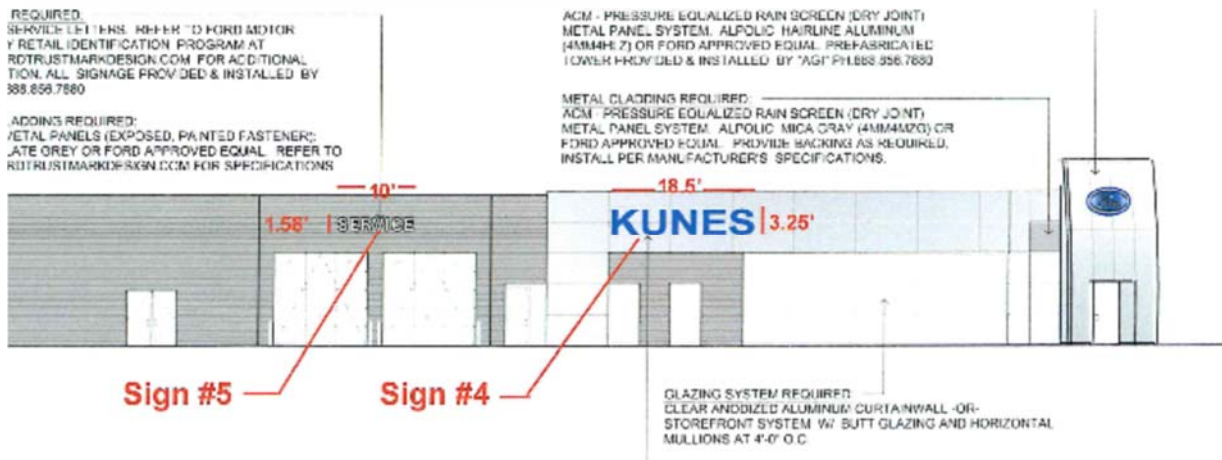
# ANTIOCH ECONOMIC DEVELOPMENT

## NEW DEVELOPMENTS



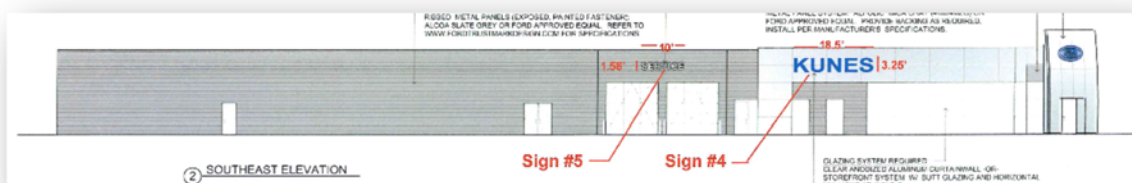
### HORTIS DEVELOPMENT (approved)

Antioch's newest entitled commercial project was approved in 2016 at the northeast corner of Route 173 and Deep Lake Road. The site contains approximately 15.60 acres and contains three (3) outlots and 71,500 square feet of future retail. The subject site is adjacent to existing wetlands and open space and the overall design of this retail center integrates sensitively with the adjacent open space. Extensive efforts have been made to incorporate quality architecture into this future retail center.



### KUNES FORD (Proposed)

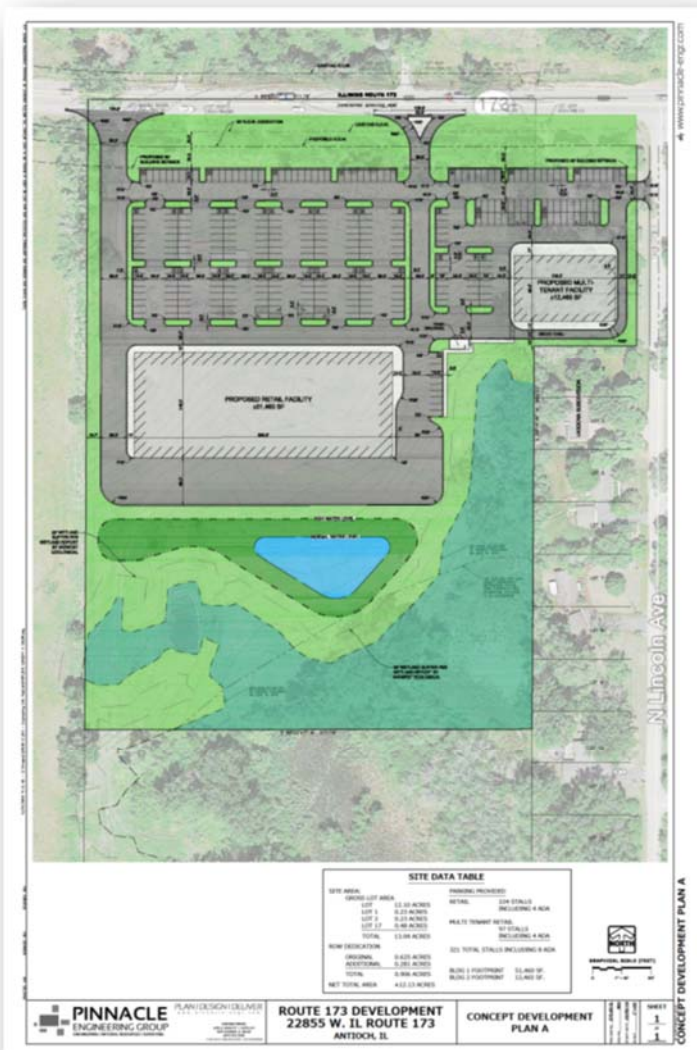
Kunes Ford is currently proposing a new 35,372 square foot dealership on their campus at Route 173. The Village is working with Kunes Ford on expanding their current site by an additional 2.5 acres. The existing showroom will be remodeled and a new showroom and service department will be constructed at Rt 173 and the newly planned Grimm Road alignment.





## ANTIOCH BUSINESS PARK

A new 514,000 square foot light industrial building was approved for the Antioch Business Park in 2016. With this newest addition, there is now over 1,000,000 square feet of light industrial space that has been approved for this business park. The Antioch Business Park is approved for 2,000,000 square feet.



### PETTY FARM (Proposed)

The new **Petty Commercial** development is proposed for a 13.0 acre site at Route 173 and Lincoln Avenue. This concept is currently before the PZB now. The applicant is seeking approval of a concept that could potentially contain up to 64,000 square feet of new commercial space to the Route 173 commercial corridor.

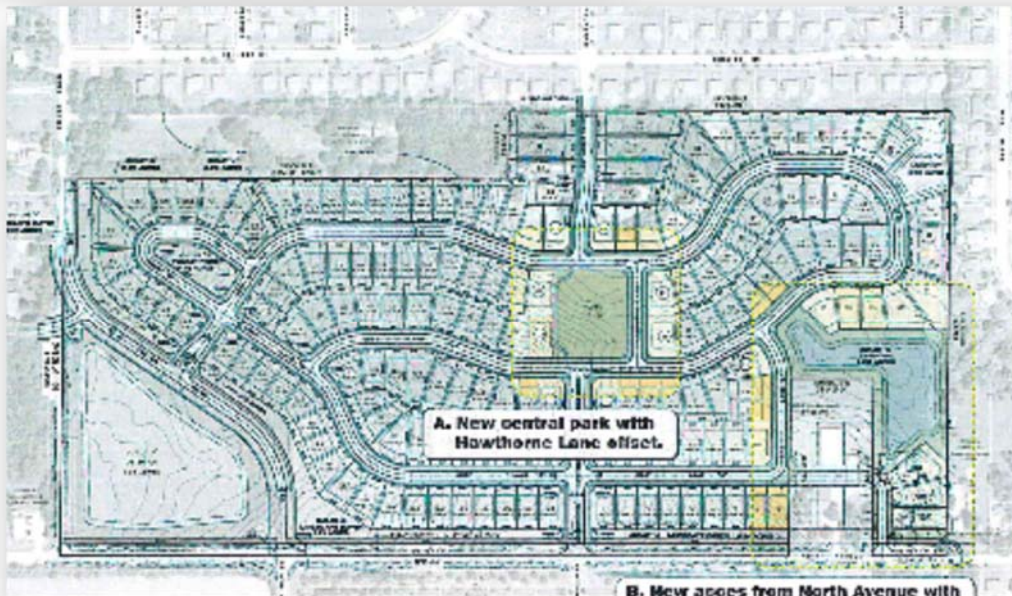
In addition the applicant has provided an alternative concept that would contain a new auto dealership on the subject site. As envisioned, the site could attract a retail center with a drive-thru end cap. The location of the site is across the street from the previous "Market Place PUD" and staff anticipates growing commercial interest in this area.

The subject site is adjacent to extensive wetlands and Lake County Forest Preserve. Staff is currently working with the applicant on the design of the project to incorporate extensive Best Management Practices and landscape buffering to protect these sensitive areas.

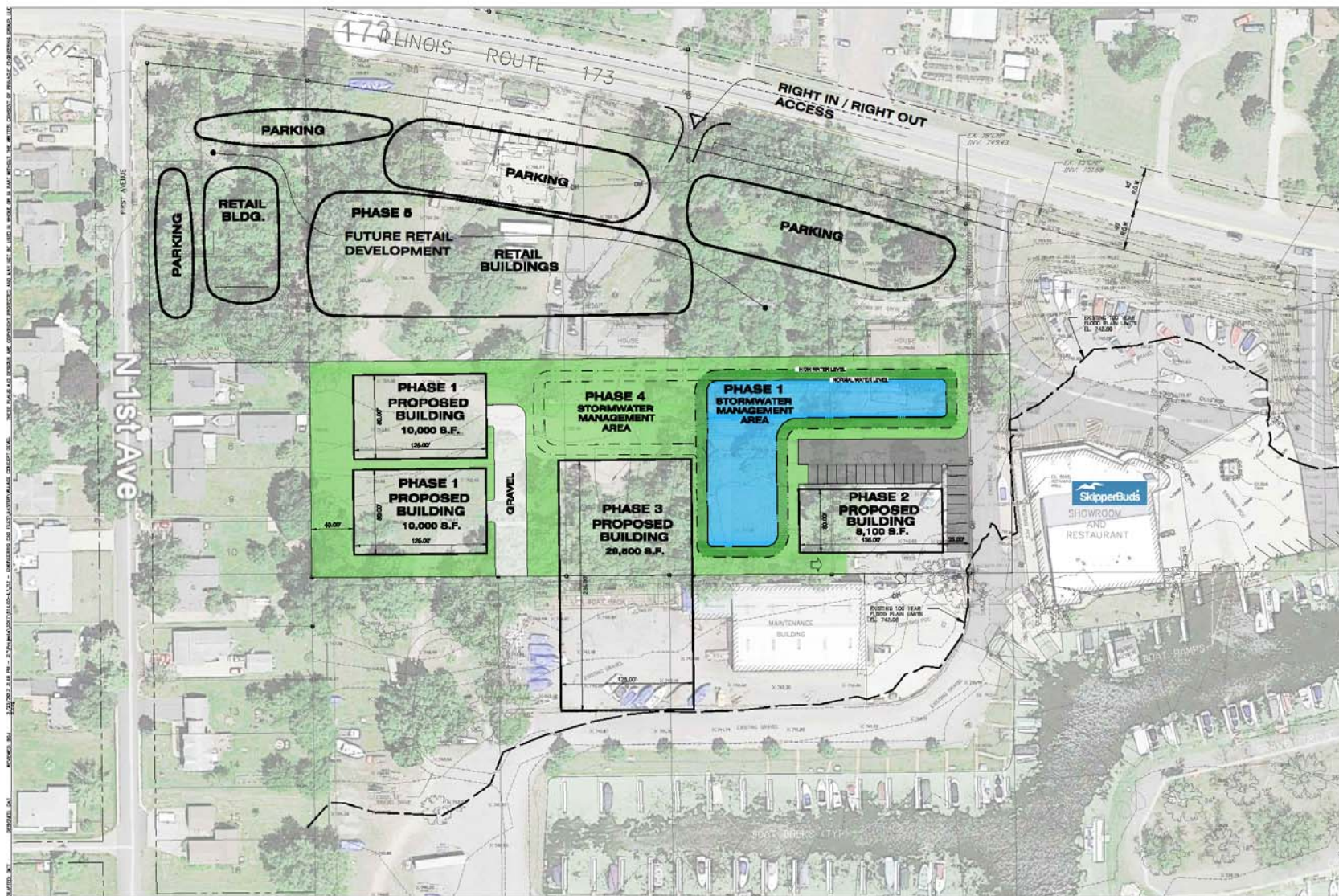


## Clublands of Antioch

D.R. Horton is potentially purchasing 178 lots within the Clublands development. This 954 single-family unit development has become active again with D.R. Horton's new commitment to the development. A new model is open for D.R. Horton and the Village anticipates strong home sales in 2017 and 2018. A new clubhouse will be constructed with the 100th sale by D. R. Horton.



A new 170 unit single family development on approximately 71.0 acres of land at Trevor and North Avenue is currently working its way through the approval process. **Hawthorne Ridge** proposed by Lexington Homes is the first new residential development proposed in Antioch in over a decade. The applicant has submitted extensive architectural design standards and the average lot size would be approximately 10,000 square feet in this proposed



www.pinnacle-engr.com

SKIPPERBUD'S CONCEPT DEVELOPMENT PLAN B


**PINNACLE ENGINEERING GROUP**  
 VILLAGE OF  
**Antioch**  
 AUTHENTIC by nature

**SKIPPERBUD'S**  
 24901 W. ILLINOIS ROUTE 173  
 ANTIOCH, ILLINOIS

REVISIONS

CONCEPT DEVELOPMENT  
 PLAN B

|       |           |         |         |
|-------|-----------|---------|---------|
| NO. 1 | DATE      | BY      | CHKD.   |
| 1     | 10/1/2014 | ANTIOCH | ANTIOCH |
| 2     | 10/1/2014 | ANTIOCH | ANTIOCH |

SHEET  
 C-2  
 C-2

**LAWRENCE M. HANSON, MAYOR**